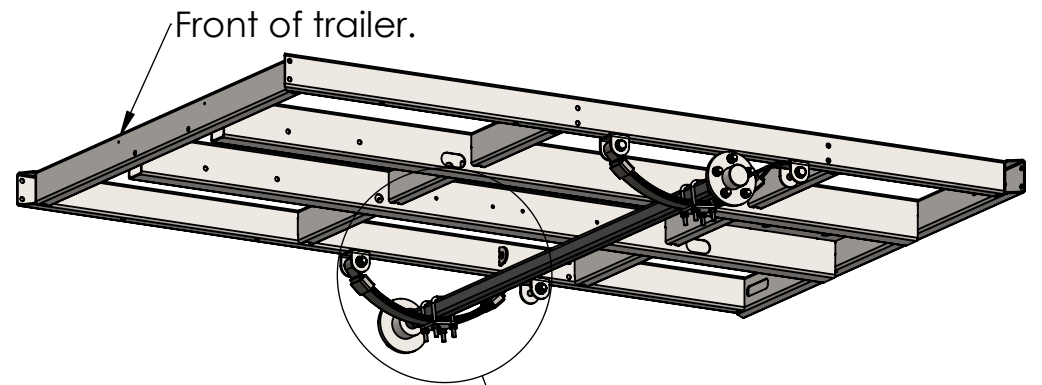
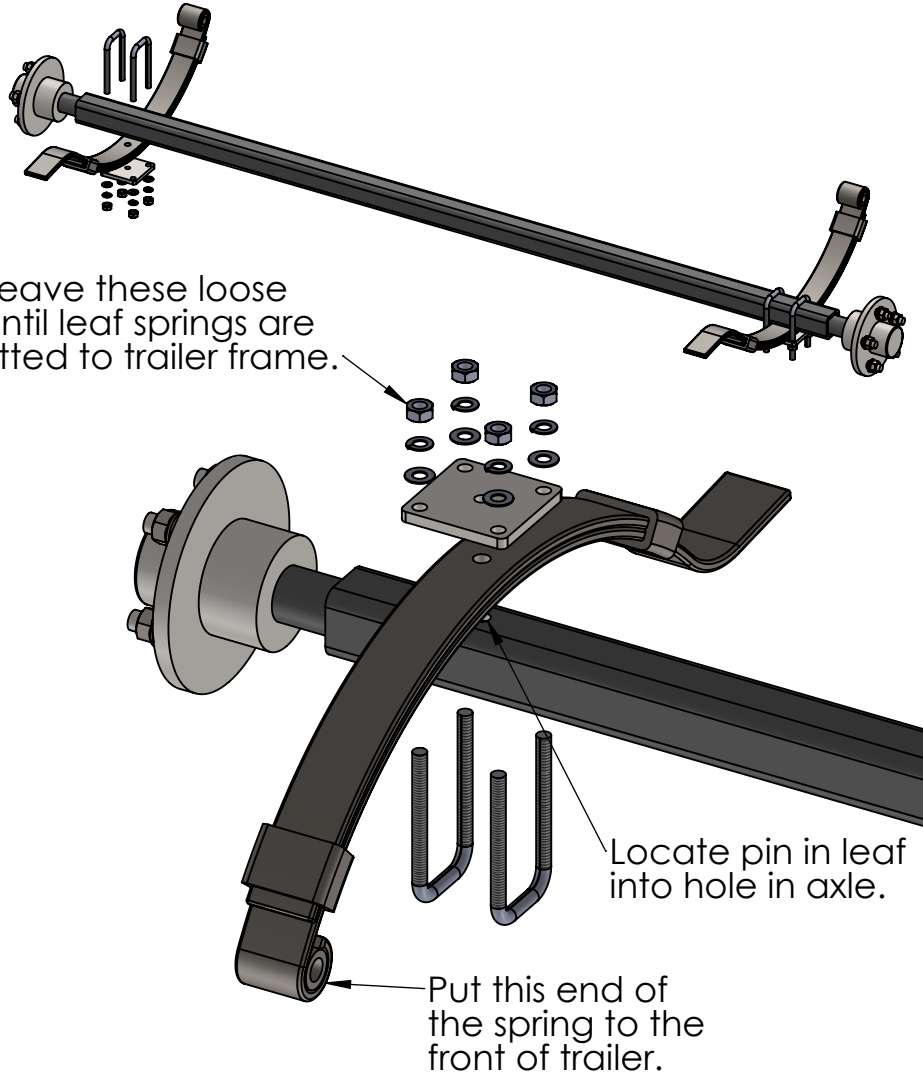


All bolts are to be fitted with a flat washer under the bolt head and a flat washer and spring washer under the nut, except for nyloc nuts which do not require a spring washer. Some components may be hidden in drawing views for additional visibility but don't require removal for assembly. Components may vary depending on optional extras.



Fit this bolt on both springs first and then swing the assembly up to insert the 2nd bolt.

Put this end of the spring to the front of trailer.

Tighten these nuts once the springs are fitted to the trailer frame.

M16x100 with flat washer either side and nyloc nut.

Drawn Date: 14/12/2020  
 Drawn by: Brad Webb  
 Dimensions in mm

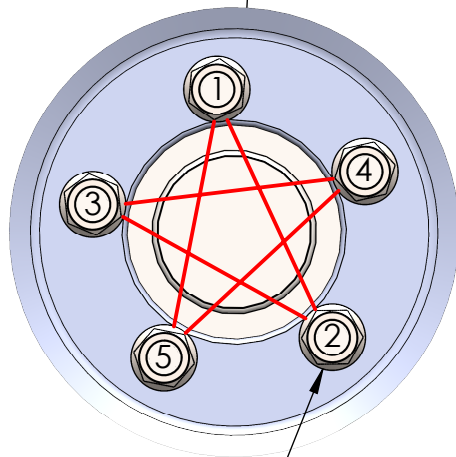
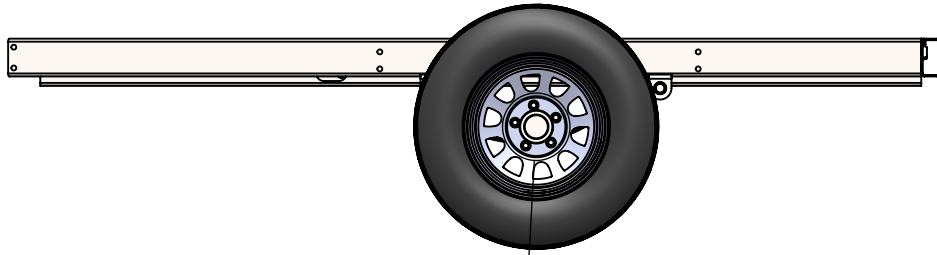
Description:  
 Trailer assembly procedure

Drawing Number:  
 N/A

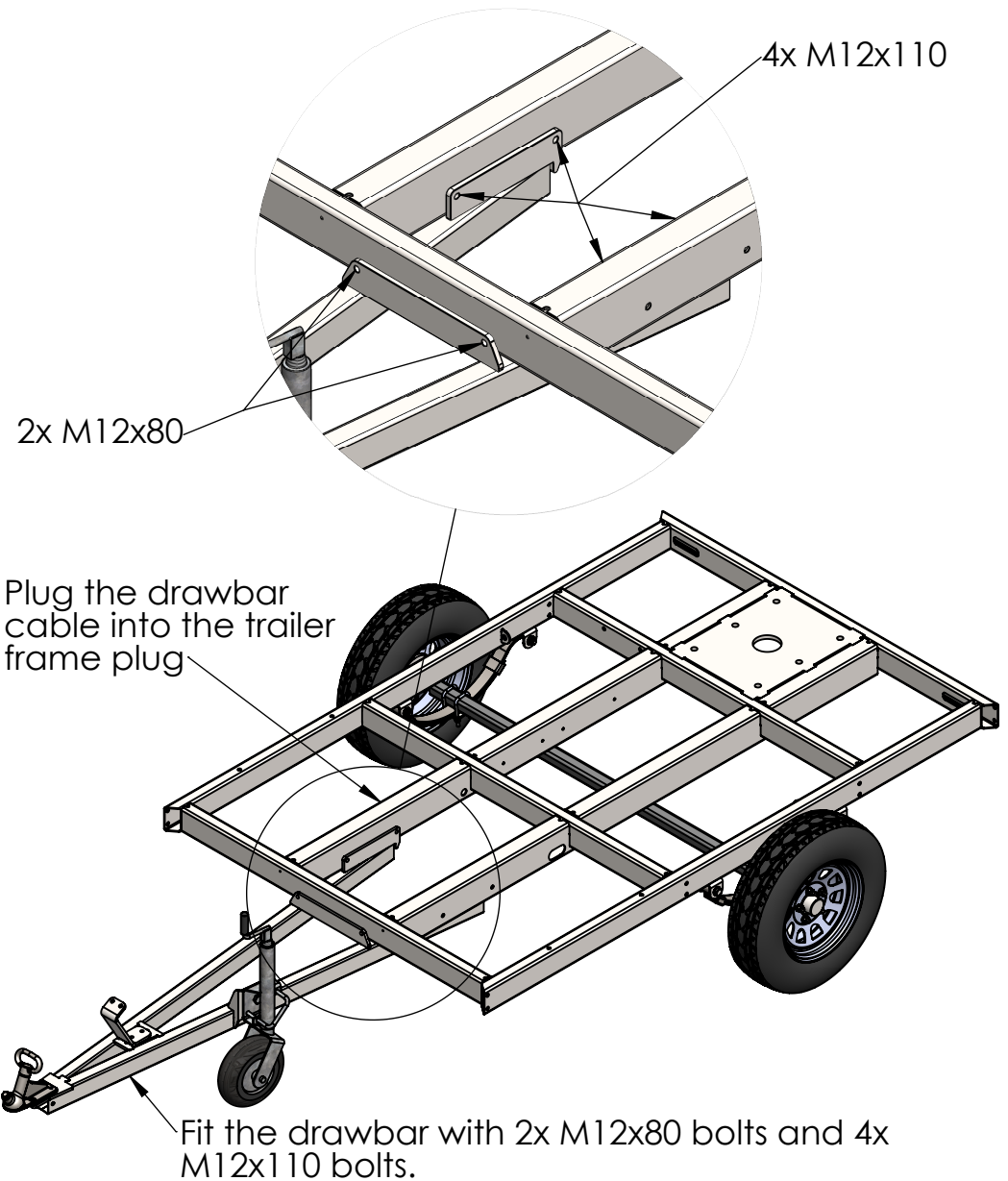
Revision: **A** Sheet: 1 of 4

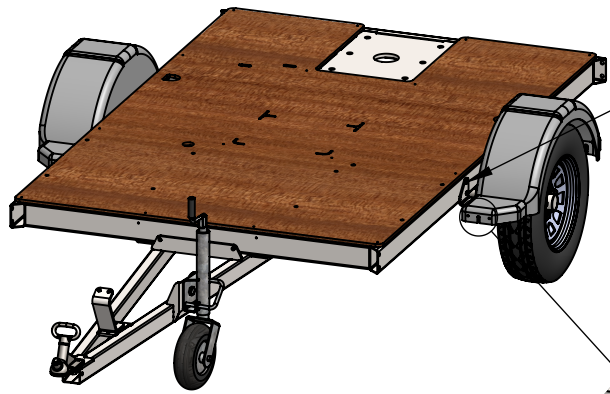
**LOADSCAN**  
 LOAD VOLUME SCANNER

Comments:



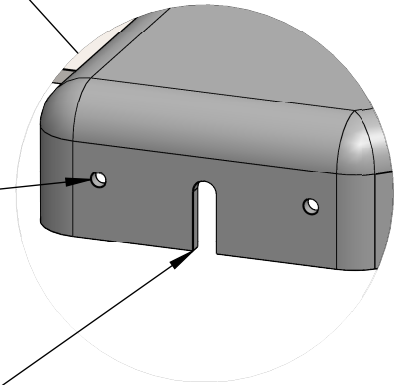
Fit the wheels and tighten the wheelnuts evenly following the order of the pattern shown.





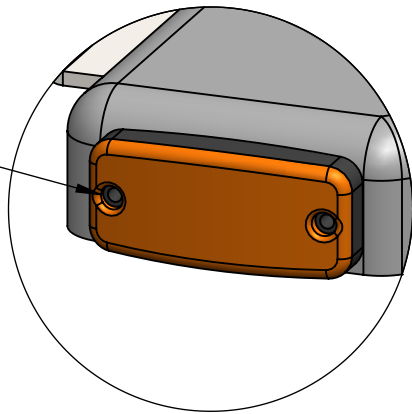
Fit both mudguards to the trailer frame with 8x M12x80 bolts.

The end of the mudguards with the holes in it goes towards the front of the trailer for the side marker lights to be fitted to.

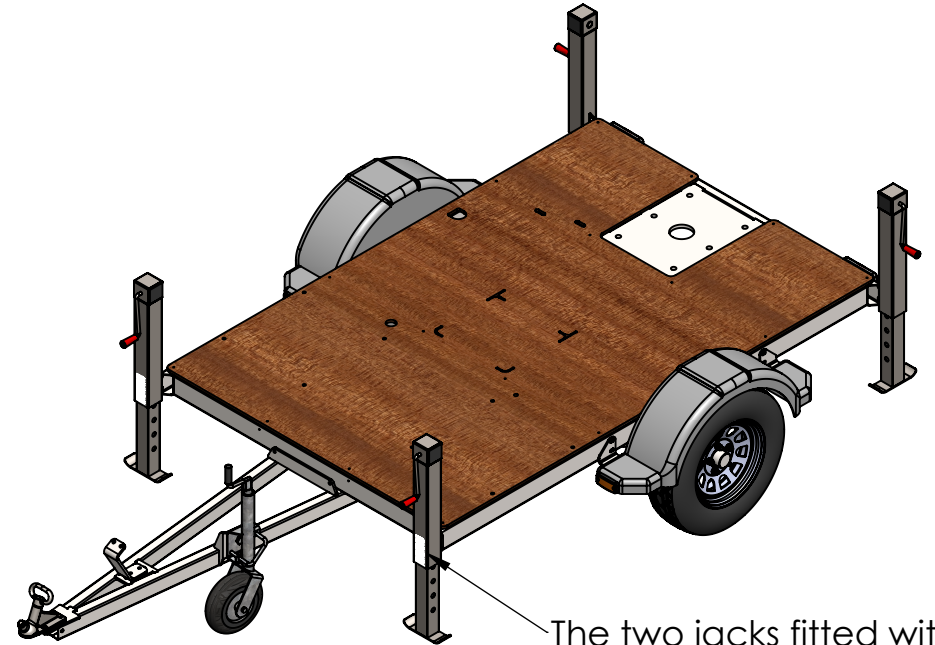


The slot cut in the middle for for the light cable to slide through when fitting the side marker lights.

Fit the side marker lights to the mudguards with the M6x25 capscrews.

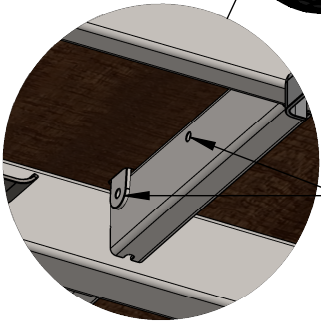
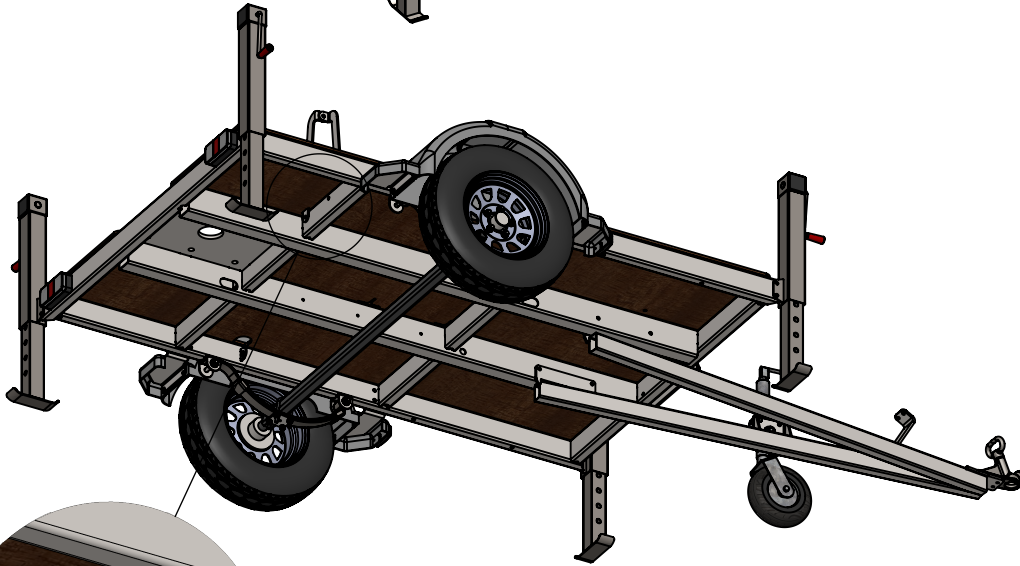
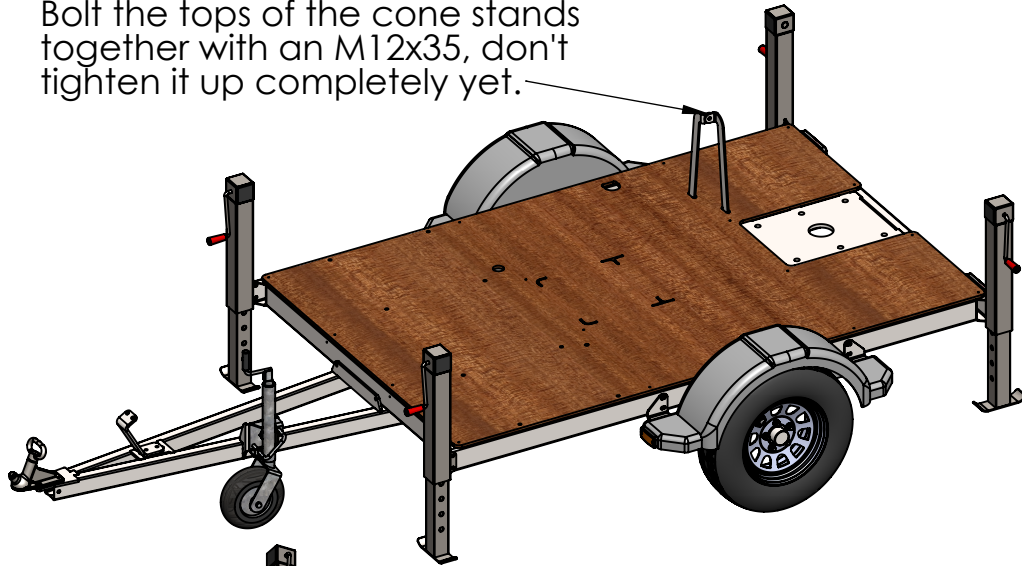


Mount the jacks to each corner of the trailer frame on the outside of the box section, use 2x M12x35 bolts per jack and check to make sure each jack is sitting verticle before tightening the bolts right up.



The two jacks fitted with white reflectors go on the front of the trailer.

Bolt the tops of the cone stands together with an M12x35, don't tighten it up completely yet.



Bolt the cone stand to the trailer frame with 2x M12x80 bolts, and then tighten up to top M12x35.

Drawn Date: 14/12/2020  
Drawn by: Brad Webb  
Dimensions in mm

Description:  
Trailer assembly procedure

Drawing Number:  
N/A

Revision: A Sheet: 4 of 4

**LOADSCAN**  
LOAD VOLUME SCANNER

Comments: